



US008013281B2

(12) **United States Patent**  
**Morgan et al.**

(10) **Patent No.:** **US 8,013,281 B2**  
(45) **Date of Patent:** **Sep. 6, 2011**

(54) **SYSTEMS AND METHODS FOR CALIBRATING LIGHT OUTPUT BY LIGHT-EMITTING DIODES**

(75) Inventors: **Frederick M. Morgan**, Quincy, MA (US); **Ihor A. Lys**, Milton, MA (US)

(73) Assignee: **Philips Solid-State Lighting Solutions, Inc.**, Burlington, MA (US)

(\*) Notice: Subject to any disclaimer, the term of this patent is extended or adjusted under 35 U.S.C. 154(b) by 82 days.

(21) Appl. No.: **12/345,953**

(22) Filed: **Dec. 30, 2008**

(65) **Prior Publication Data**

US 2010/0148689 A1 Jun. 17, 2010

**Related U.S. Application Data**

(63) Continuation of application No. 11/064,069, filed on Feb. 22, 2005, now Pat. No. 7,482,565, which is a continuation of application No. 10/842,242, filed on May 10, 2004, now abandoned, which is a continuation of application No. 09/675,419, filed on Sep. 29, 2000, now abandoned.

(60) Provisional application No. 60/156,672, filed on Sep. 29, 1999.

(51) **Int. Cl.**  
**G01J 1/32** (2006.01)

(52) **U.S. Cl.** ..... **250/205**; 315/291; 362/231; 362/800

(58) **Field of Classification Search** ..... 250/205; 315/291, 307; 362/800

See application file for complete search history.

(56) **References Cited**

U.S. PATENT DOCUMENTS

5,301,090	A *	4/1994	Hed	362/558
5,608,213	A *	3/1997	Pinkus et al.	250/252.1
6,222,172	B1 *	4/2001	Fossum et al.	250/205
2002/0113192	A1 *	8/2002	Antila	250/205
2003/0137258	A1 *	7/2003	Piepgas et al.	315/291
2010/0194283	A1 *	8/2010	Ochi et al.	315/117

\* cited by examiner

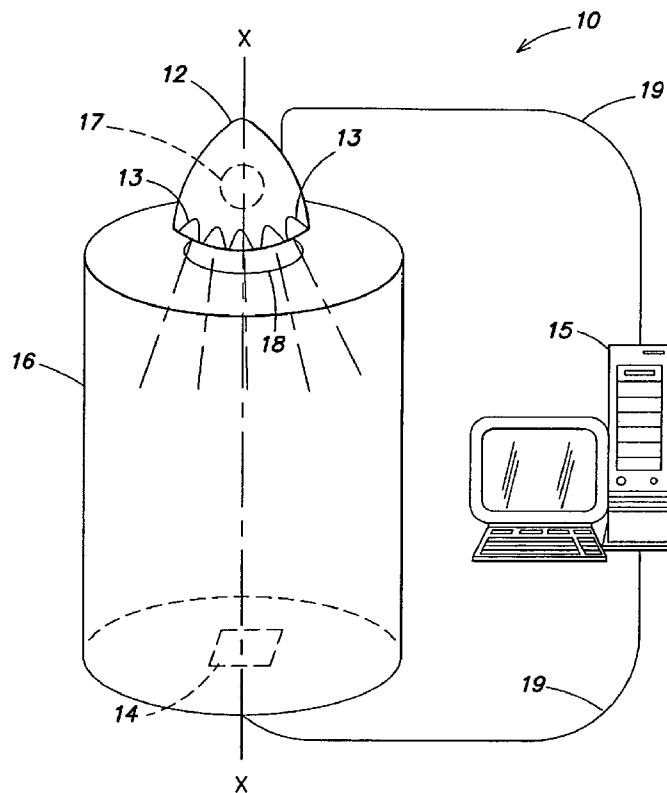
*Primary Examiner* — Georgia Y Epps

*Assistant Examiner* — Kevin Wyatt

(57) **ABSTRACT**

A system and method for calibrating light output from an LED is provided. The system includes a support on which an LED is positioned, a photosensor to measure the light output from the LED, and means for calibrating and adjusting the light output of the LED. Calibration is accomplished by measuring the light output from the LED, comparing such output against a reference value, and adjusting the measured output against the reference value.

**15 Claims, 6 Drawing Sheets**



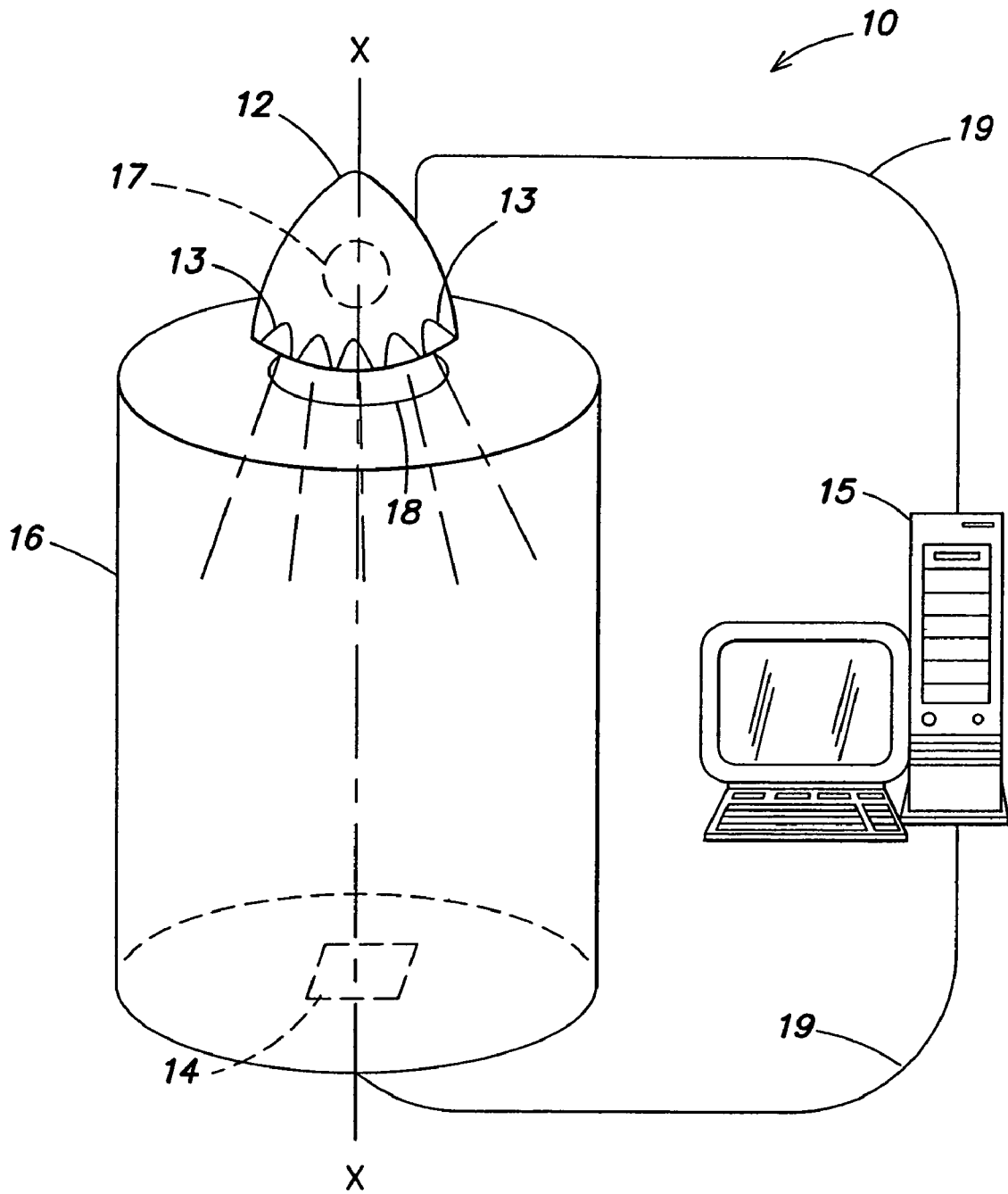


FIG. 1

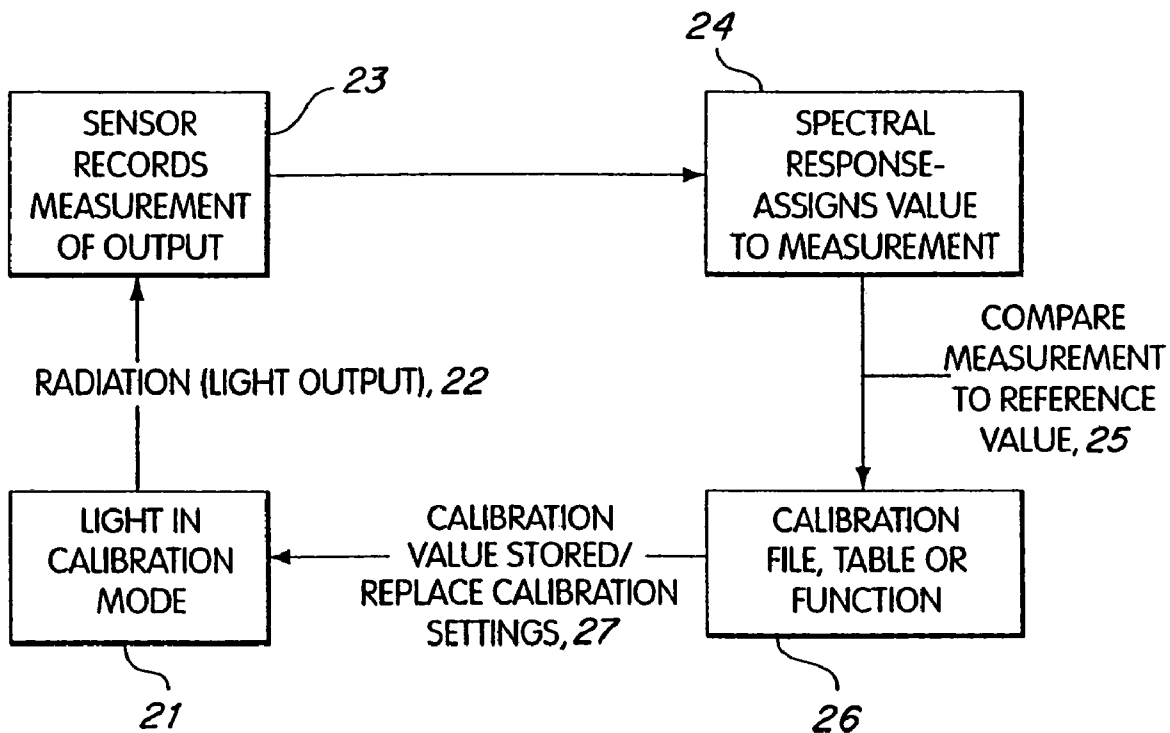
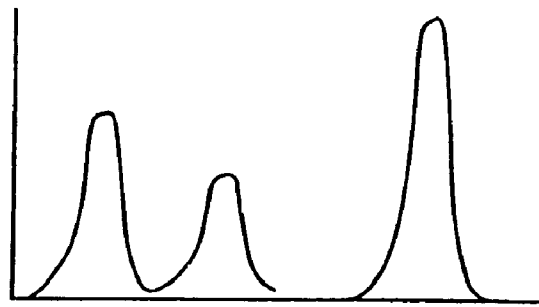


FIG. 2



BEFORE CALIBRATION COLOR  
PEAKS CAN RANGE WIDELY

**FIG. 3A**



AFTER CALIBRATION COLOR PEAKS  
CAN BE SCALED APPROPRIATELY

**FIG. 3B**

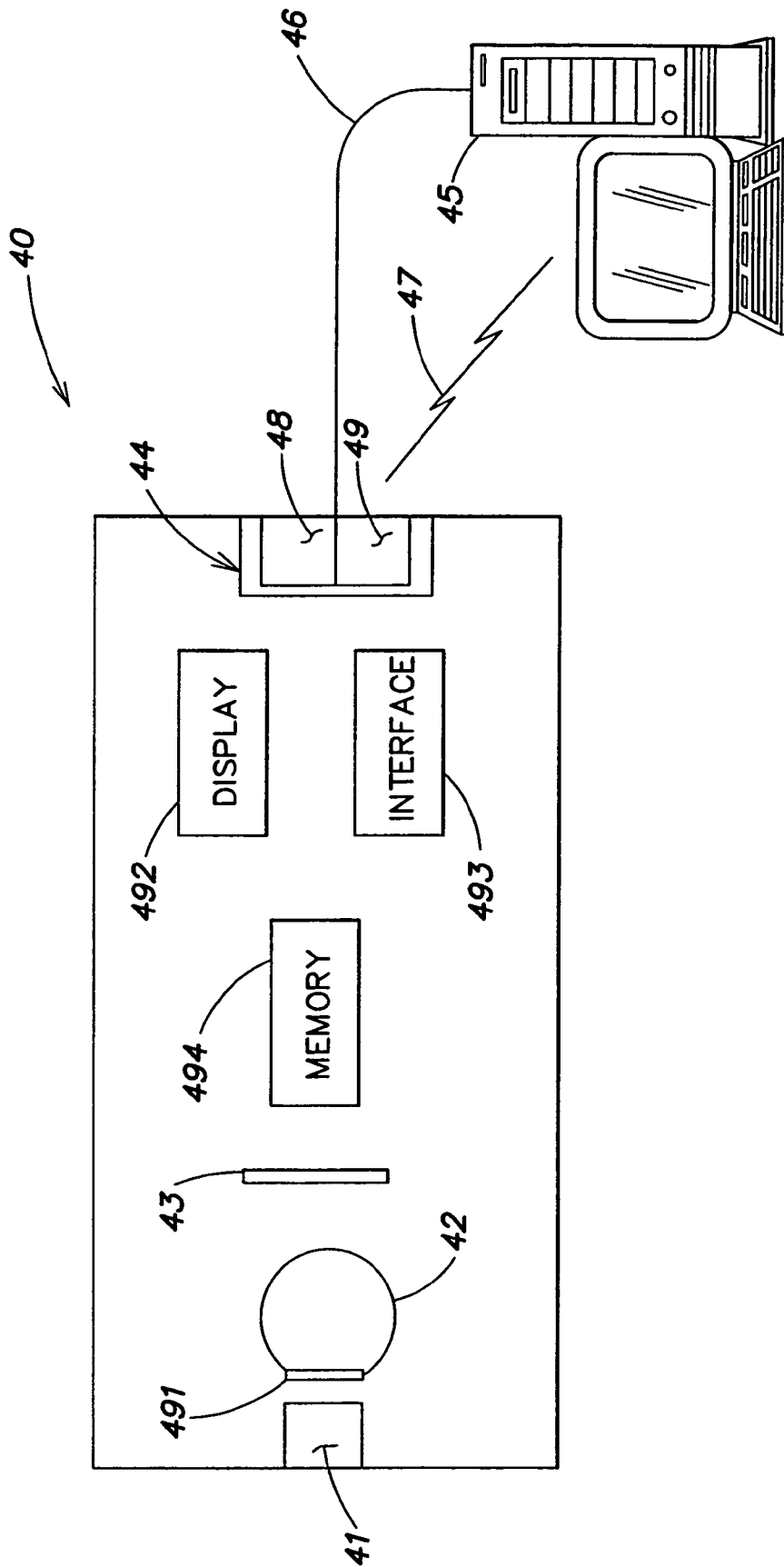


FIG. 4

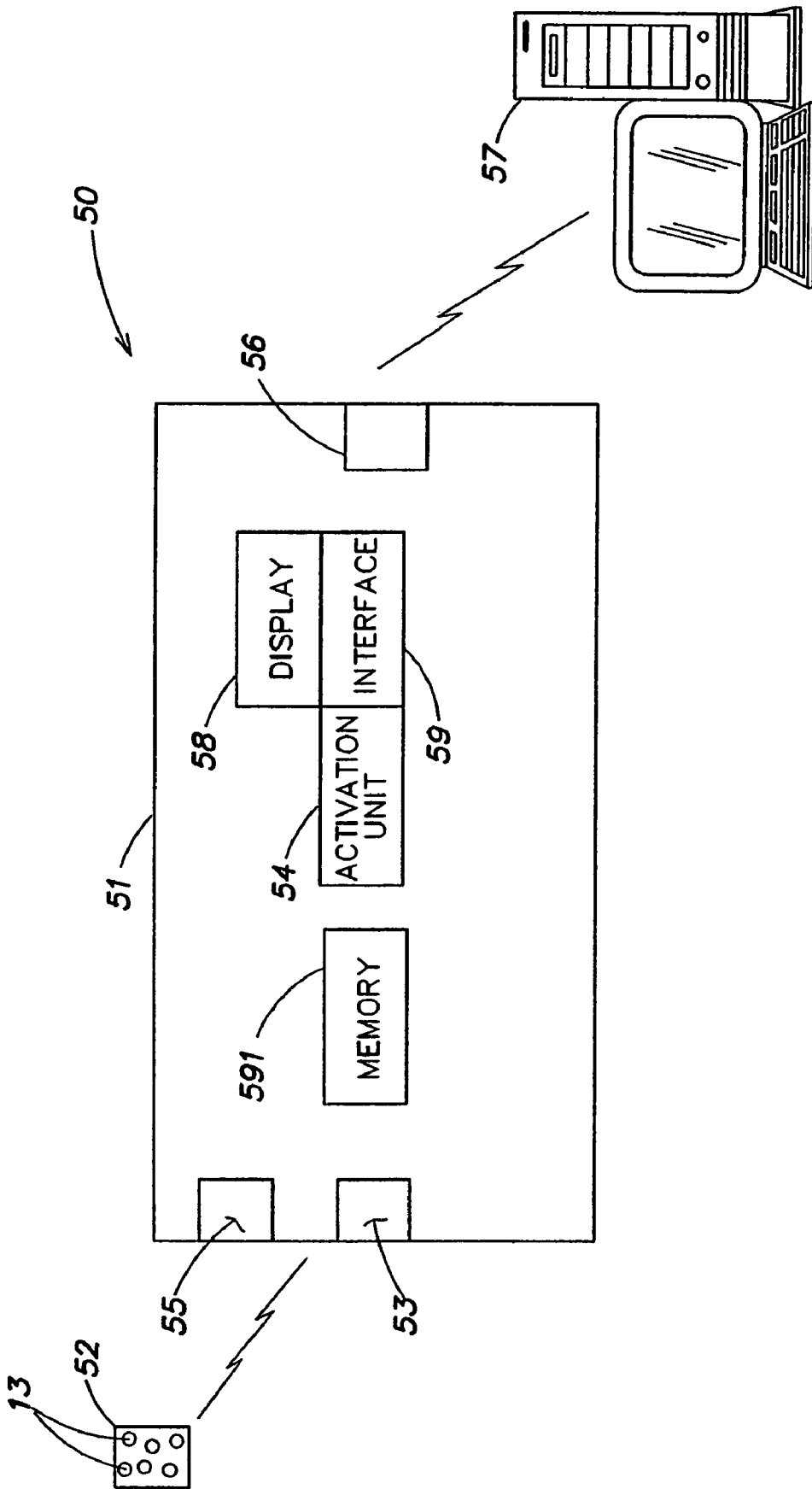
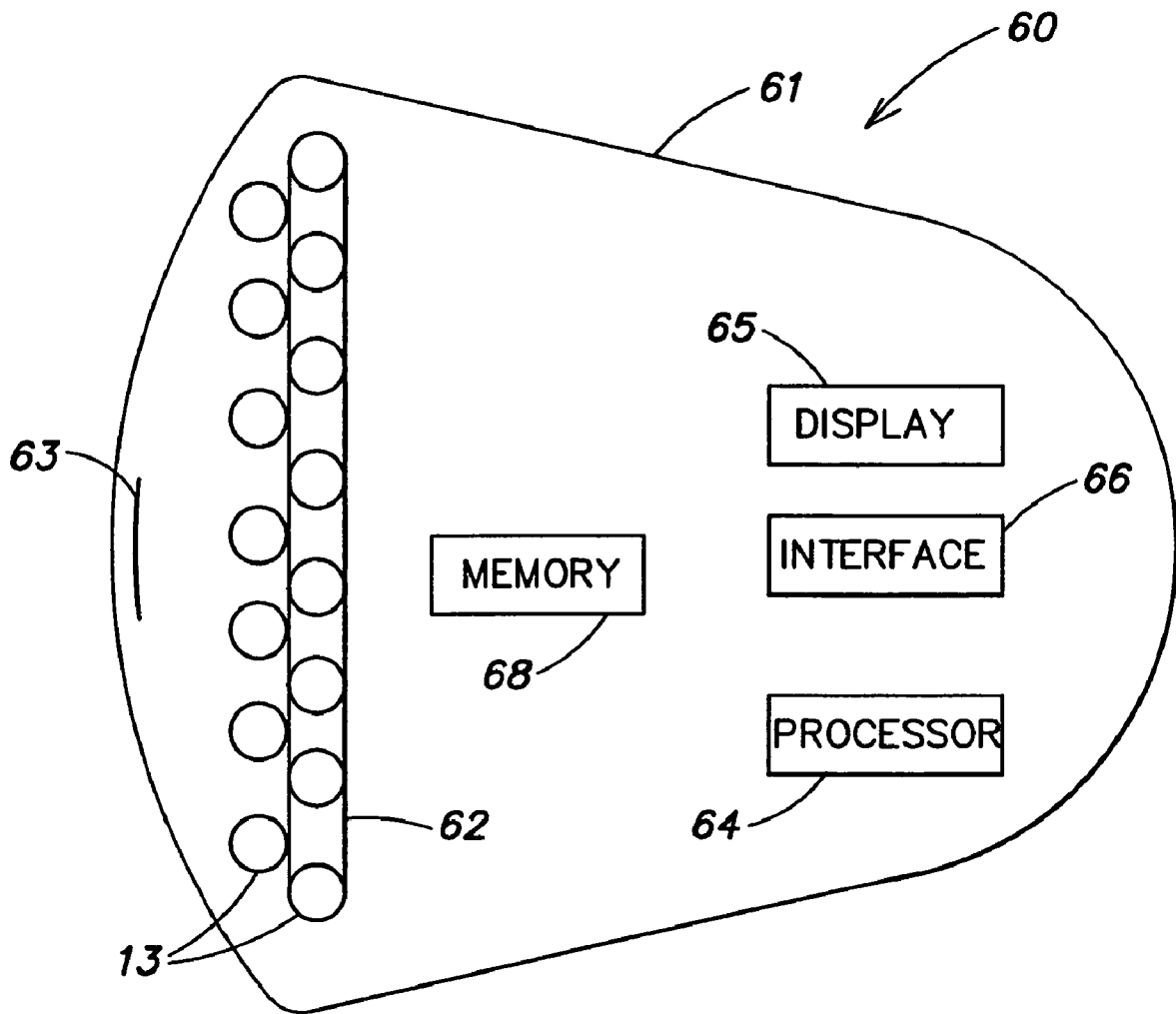


FIG. 5



**FIG. 6**

## SYSTEMS AND METHODS FOR CALIBRATING LIGHT OUTPUT BY LIGHT-EMITTING DIODES

### CROSS-REFERENCES TO RELATED APPLICATIONS

This application claims the benefit, under 35 U.S.C. §120, as a continuation of U.S. patent application Ser. No. 11/064,069, which in turn claims priority to U.S. patent application Ser. No. 10/842,242, filed May 10, 2004, which in turn claims priority to U.S. patent application Ser. No. 09/675,419, filed Sep. 29, 2000, which in turn claims priority to U.S. Provisional Application Ser. No. 60/156,672, filed Sep. 29, 1999. Each of the foregoing applications is hereby incorporated herein by reference.

### TECHNICAL FIELD

The present invention relates generally to light-emitting diodes, and more particularly, to systems and methods for calibrating illumination output generated by light-emitting diodes.

### BACKGROUND

Light-emitting diodes (LEDs), when disposed on a circuit, accept electrical impulses from the circuit and convert the impulses into light signals. LEDs are typically energy efficient and can have a long lifetime.

Various types of LED exists, including air gap LEDs, GaAs light-emitting diodes, polymer LEDs, and semi-conductor LEDs, among others. Although most LEDs in current use are red, LEDs may take any color. In addition, when several LEDs, each of a commonly used primary color—red, blue or green—are combined in different proportions, the combination can generate almost any color in the visible spectrum in response to changing electrical signals. Alternatively, a single LED may be designed to include dies, each with a primary color (i.e., red, blue, and green), which can be combined to generate almost any colors.

Traditionally, LEDs have been poor in their ability to generate sufficient light output for illumination. Accordingly, LEDs have been used in low light environments, such as a flashing light on a modem or other computer components, or as a digital display of a wristwatch. However, over the past several years, the ability of the LEDs to generate sufficiently high intensity light output has increased substantially. Thus, LEDs have recently been used in arrays for flashlights, traffic lights, scoreboards and similar displays, and as television displays.

Despite this new development, the manufacturing of high-intensity LEDs, is still a challenging process. In particular, it has been difficult to precisely predict the performance of an LED-based product in terms of total light output and quality of the output. Specifically, as an LED increases in output intensity, the quality of the output decreases.

In general, during manufacturing, the LEDs are tested for total light output and subsequently classified into “bins”. Depending on the manufacturer, however, this classification can happen either after the semiconductor wafer has been sliced into individual dies or after the die is packaged into the LED plastic housing. In either case, for each LED, a light output determination is made of both wavelength (the color of light) and intensity of the output. The LEDs are then sorted and sold based on the bin-type for which they have been classified.

It should be noted that even with bin sorting, there remain substantial and perceptible differences in the light output amongst LEDs. This difference, as a result, can lead to perceptible differences in light output between otherwise identical LED-based products. Moreover, if “additive mixing” is employed, wherein a few LEDs of different colors are mixed to produce other colors, should the color in one or more of these LEDs be off, then the results of the additive mixture will also be off.

Furthermore, the light output from the LEDs may change over time as a result of a variety of factors, and can also contribute to perceptible differences in light output. For instance, the LEDs may degrade or shift in color output over time, as part of a normal deterioration of the LEDs. In addition, long term exposure of the LEDs to high heat, or requiring the LEDs to maintain high intensity light output over an extended period of time, such that the LEDs produce too much heat, or if the heat can not be removed sufficiently quickly away from the LEDs, such effects can accelerate the deterioration of the LEDs and lead to permanent changes in the LEDs.

Accordingly, it is desirable to provide a system which can calibrate and adjust the light output of each LED, so that uniformity in light output by the LED can be achieved, during manufacturing, and subsequently maintained during the lifetime of the LED, either alone or in combination.

### SUMMARY

The present invention, in accordance with one embodiment, provides a method for calibrating light output by a light-emitting diode (LED). The method includes generating light output through the LED. Subsequently, measurement of the light output generated by the LED is obtained. Thereafter, the light output measurement is compared to a reference value designated for an LED of the type similar in classification (i.e., from the-same bin) to the LED being calibrated. Once the comparison is made, if there are any differences between the light output measurement and the reference value, the light output of the LED being calibrated is adjusted against the reference value. A calibration value is thereafter formulated from the adjustment of the output measurement against the reference value. Subsequently, the calibration value may be stored in a manner which permits access by the calibrated LED, so that upon a subsequent generation of light output, the calibration value may be accessed to permit the calibrated LED to generate a light output that approximates an output accorded to the reference value. The light output, may be calibrated to adjust the intensity of the output, as well as the color of the output by the LED. It should be noted that the calibration protocol of the prevention invention may be implemented in an environment where there is an existence or absence of ambient light.

In another embodiment, the present invention provides a system for calibrating light output by an LED. The system, in one embodiment, includes a support to which an LED to be calibrated may be positioned thereon. The system further includes a photosensor, placed in a manner which permits receipt of light output by the LED, for obtaining an output measurement from the light output. The system further includes a processor in communication with the photosensor and for formulating a calibration value from an adjustment of the output measurement against a reference value. The processor may also be in communication with the LED for transmitting thereto a resulting value from the calibration. A memory mechanism may be provided in association with the

LED on which the resulting value from the calibration may be stored for subsequent accessed during light output generation by the LED.

The present invention also provides a calibration device for calibrating light output from an LED. The device includes a support to which an LED to be calibrated may be positioned thereon, and a photosensor adjacent to the support for obtaining an output measurement generated by the LED. The device further includes a communication mechanism through which an output measurement from the photosensor may be communicated to a processor for formulation of a calibration value, and through which the calibration value may subsequently be communicated to the LED and stored on a memory device coupled to the LED. The device, in one embodiment, may be a handheld device, and may include a display to provide to a user status of the light output of the LED being calibrated. The device may also include an interface to permit the user to vary light output parameters for the LED; and a memory mechanism for storing the output measurement from the photosensor, which output measurement can subsequently be communicated to an off-site processor for calibration processing. In an alternate embodiment, the device includes a calibration processor for therein for prompt and efficient calibration.

In accordance with another embodiment, a calibration device is provided for calibrating light output from an LED, while permitting the LED to remain within its illumination device (i.e., the LED does not have to be removed from the light fixture for calibration). The calibration device includes a housing, an activation unit for inducing light output from an LED to be calibrated, and a photosensor at one end of the housing for obtaining an output measurement from the light output generated by the LED. The calibration device also includes a communication mechanism in the housing through which output measurement from the photosensor can be communicated to a processor for formulation of a calibration value, and through which the calibration value may subsequently be received by the device and subsequently communicated to the LED in the illumination device. The device, in one embodiment, may be a handheld device, and may include a display to provide to a user status of the light output of the LED being calibrated, an interface to permit the user to vary light output parameters for the LED. The device may also include a memory mechanism for storing the output measurement from the photosensor, which output measurement can subsequently be communicated to an off-site processor for calibration processing. In an alternate embodiment, the device includes a calibration processor.

The present invention further provides an illumination device having a housing, an LED illumination source within the housing, and a photosensor adjacent to the LED illumination source to obtain an output measurement generated by the LED illumination source. The device also includes a processor within the housing and in communication with the photosensor for calibrating the output measurement from the photosensor against a reference value. The processor is also in communication with the LED for transmitting thereto a resulting calibration value from the processor. The device further includes a memory mechanism coupled to the LED illumination source and on which the resulting calibration value from the processor may be stored. The device may also include a display on which parameters regarding light output from the LED illumination source may be provided to inform a user of the status of the light output, and an interface to permit the user to vary the light output parameters.

#### BRIEF DESCRIPTION OF THE DRAWINGS

The various advantages of the present invention will become apparent to one skilled in the art by reading the

following specification and appended claims and by referencing the following drawings in which:

FIG. 1 illustrates, in accordance with an embodiment of the present invention, a system for calibrating light output from a light-emitting diode.

FIG. 2 illustrates schematically calibration of light output in accordance with an embodiment of the invention.

FIGS. 3A-B illustrate representative color peaks generated from an LED before calibration and after calibration.

FIG. 4 illustrates, in accordance with an embodiment of the present invention, a device for calibrating light output from a light-emitting diode.

FIG. 5 illustrates, in accordance with another embodiment of the invention, a device for calibrating light output from a light-emitting diode.

FIG. 6 illustrates, in accordance with one embodiment of the invention, an illumination device capable of calibrating the light output of its light-emitting diodes.

#### DETAILED DESCRIPTION

Referring now to the drawings, in FIG. 1, there is shown a system 10 for calibrating light output from a light-emitting diode (LED). The system 10, in one embodiment, includes a support 12, on which one or more LEDs 13 to be calibrated may be positioned. The support 12 may also accommodate a module (not shown) with one or more LEDs 13 therein, similar to those modules used in connection with various LED illumination devices. Such a module is disclosed in U.S. Pat. No. 6,016,038, which is hereby incorporated herein by reference.

The system 10 also includes a photosensor 14 for measuring the photometric output (i.e., light output) the LED 13. For the ease of discussion, reference will be made to a single LED 13, with the understanding that the system 10 is capable of calibrating-multiple LEDs. The photosensor 14, may be placed in any location relative to the LED 13, so long as the photosensor 14 can receive the output by the LED 13. Accordingly, the photosensor 14 may, for instance, be adjacent to the LED 13, or in substantial alignment with the LED 13, as illustrated in FIG. 1. An example of a photosensor which may be used in connection with the system 10 for obtaining an output measurement from the LED 13 is a photosensor manufactured by Ocean Optics Device, which can measure the color output, as well as intensity of the output.

In addition to a photometric sensor, other types of sensors may be used to measure the light output of the LED 13. Examples of sensors which may be used include, but not limited to, a photometer, spectrophotometer, spectroradiometer, spectrum analyzer, spectrometer, CCD, photodiode, photocell, and thermocouple.

A processor 15 may be provided in communication with the photosensor 14 to calibrate and adjust the output measurement received from the photosensor 14 against a reference value for intensity and/or color for such an LED. (A detailed description of the calibration process will be described hereinafter below.) The processor 15 may also be in communication with the LED 13, so as to transmit to the LED 13 a calibration value (obtained from the calibration and adjustment of the output measurement against the reference value) for adjusting the ultimate output by the LED 13, whether such adjustment is with respect to intensity or color. It should be appreciated that the calibration value, when taken into account during periods of light output by the LED 13, subsequent to the calibration, permits the light output from the LED 13 to approximate an output accorded to the reference value.

As LEDs are highly responsive to changing electrical signals, i.e., changes in the LED color and intensity state may be quite rapid in response to changing electrical signals, the processor 15 may be controlled by, for example, a computer program, to send the appropriate electrical signals to the LED 13 being calibrated. The signals from the processor 15 sent to the LED 13 may also be digital in nature, so that calibration of the LED 13 may be as precise as possible. As shown in FIG. 1, the processor 15 may be part of computer. However, it should be appreciated that the processor 15 may be part of any device capable of providing the processor with appropriate signals.

The system 10 further includes a memory mechanism 17 in association with the one or more LEDs 13, and on which the calibration value for use in adjusting the light output by the one or more LEDs 13 is stored. Memory mechanism 17 may be any commercially available memory mechanism having data storing capability. In one embodiment of the invention, the memory mechanism 17 is physically coupled to the one or more LEDs 13, so that once the calibration value has been stored thereon, the memory mechanism 17 can be removed from the support 12 along with the one or more LEDs 13. Upon subsequent generation of light output from the LED 13 in, for example, an illumination device, the calibration value on the memory mechanism 17 can be accessed to affect the output generated from the LED 13. In other words, the calibration value permits the light output from the LED to approximate light output accorded to a reference value for that type of LED.

Still referring to FIG. 1, the system 10, in accordance with one embodiment of the present invention, includes a housing 16 extending from the support 12 to the photosensor 14. The housing 16, in one embodiment, may be an enclosed structure configured to encompass the support 12 and the photosensor 14, so as to block ambient light from interfering with measurement of the LED light output by the photosensor 14 during calibration. The housing 16 may also be provided with an opening 18 through which the LED 13 can access within the housing and be positioned on the support 12.

As shown in FIG. 1, communication between the processor 15 and either of the LED 13 or the photosensor 14 can be implemented by a cable 19. Alternatively, a wire, network, or a combination thereof may be employed in place of cable 19. It should be appreciated that communication between the processor 15 and either of the LED 13 or the photosensor 14 can be by wireless means, including but not limited to, radio frequency (RF), infrared (IR), microwave, electromagnetic transmission, acoustic, Bluetooth, home RF, or other wireless means.

The system 10 can be used to calibrate light output, such as light intensity, from an individual LED or multiple LEDs. Alternatively, the system 10 can be used to calibrate the color illumination of an LED having multiple color dies, or multiple LEDs, each of different color. The need to calibrate the color illumination can be important, especially when color mixing is involved, where the cumulative output of the individual die in one LED, or of multiple color LEDs can be affected by any perceptible differences between the dies or LEDs of the same color. For example, when Red, Green and Blue dies are used in one LED or when groups of Red, green and Blue LEDs are used to generate a range of color within a color spectrum, including white light, even after appropriate circuit implementations, if there are any malfunctioning dies or LEDs, those malfunctioning dies or LEDs can generate very different light intensity and color outputs, thereby affecting the overall light output. These differences can often seen in older LEDs (i.e., after the LEDs have been in use for some

time), and can sometime be observed in new LEDs, even in those newly manufactured. Accordingly, it is useful to calibrate newly manufactured LEDs or recalibrate used LEDs, so that a desired light output can be achieved.

Calibration may be accomplished, in an embodiment, through the use of photosensor 14. As shown in FIG. 1, the photosensor 14 and LED 13 can be positioned within the housing 16 along axis X and facing towards one another. Although the photosensor 14 and the LED 13 can be in alignment, it should be appreciated that their position relative to one another can be in any arrangement, so long as the photosensor 14 is capable of receiving the light output from the LED 13 in a uniform manner.

Referring now to FIG. 2, a process for calibrating light output is shown therein. Once the LED 13 is in position for calibration, as indicated in item 21, the LED 13 may be caused to generate a light output 22. If one or more LEDs 13 are being calibrated, each LED in the group may be caused to generate light output in sequential fashion. As each LED 13 generates its light output, for example, red, green or blue, the photosensor 14 records, in step 23, a peak measurement from the light output, and assigns, in step 24, as a spectral response, a relative value for the peak measurement. As shown in FIG. 3A, the peak value for the light output can vary widely. In step 25, the peak value for each individual output may be compared to a reference value (e.g., within a table of reference values) that had previously been established as representative for an LED of that type. If there are any differences between the peak value and the established reference value, the peak value for that individual output is adjusted, in step 26, by scaling that individual output to the reference value. The adjustment of the light output in this manner can result in the higher peaks being reduced (i.e., scaled) to match the value of the lower peaks, see FIG. 3B, to provide a uniform light output. It should be noted that several iterations (i.e., adjustments) may be needed to get an adjusted peak value that closely resembles the reference value. Moreover, in a situation wherein calibration of a plurality of LEDs is required, once calibration for one LED is completed, calibration for the next LED can be initiated.

In adjusting the output, a calibration value may be formulated. The calibration value for the light output of each LED 13 may then be stored, in step 27. This calibration value, once stored, can replace previous calibration settings, if any, and can be employed in all future/subsequent generation of light output by the LED 13. Storage of the calibration value can be accomplished by providing the LED 13 with a memory mechanism 17, such as a memory chip (see FIG. 1). In this manner, when commands are sent to the LED 13 for generating light output, the stored calibration value for that particular LED may be accessed from the memory chip and used to permit the LED 13 to generate a light output which approximates a light output accorded to the reference value.

As indicated previously, the system 10 of the present invention may be used to adjust differences in the color output by an LED 13 when compared against a reference output. In addition, the system 10 may also be used to adjust the intensity of the light output by an LED.

The system 10 can further be used to check and/or diagnose a variety of other potential problems by analyzing the light output of the LED. For example, the system 10 can check to see whether the light output intensity of an LED is not in compliance with the reference output value. If such is the determination, the finding can indicate a circuit problem, missing LEDs, or LEDs incorrectly placed during the assembly process.

The system **10** may also be used to determine if there have been any LED placement errors during the LED board assembly. In particular, a discrepancy between a measured color value and referenced color value may indicate that one or more of the LEDs may have been placed improperly, e.g., a green LED in a red location or some other incorrect combination, during assembly.

If a substantial hue difference is detected, such may indicate that a particular run/batch of LEDs may have been improperly made, resulting in off-color LEDs.

The information obtained when employing the system **10** can also be used to identify problematic trends in the LED manufacturing process. For instance, the information may be used to determine whether the overall output by the LEDs is changing (i.e., deteriorating over time) for each batch of LEDs produced by comparing the initial information logged on the computer running the calibration software against the information from the latest batch.

As a note, should photosensor **14** or any of the listed sensors become unavailable, the system **10** is designed so that human eyes may be employed in the calibration, where a user could employ the processor **15** to calibrate the light output from the LED according to his subjective settings.

Looking now at FIG. 4, FIG. 4 illustrates, in accordance with an embodiment of the present invention, a device **40** for calibrating light output from a light-emitting diode. The device **40** includes a support **41**, to which an LED **42**, for instance, newly manufactured, or from an illumination device (not shown), may be positioned thereon for calibration. The device **40** also includes a photosensor **43** adjacent to the support **41** for obtaining an output measurement generated by the LED. The photosensor **43** may be placed in any location relative to the LED **42**, so long as the photosensor **43** can receive the output by the LED **42**. Accordingly, the location of the photosensor **43** may be adjustable within the device **40**, so that for example, the photosensor **43** may be moved adjacent to the LED **42**, or into substantial alignment with the LED **42**.

The device **40** further includes a communication mechanism, such as port **44**. The port **44** may be designed to be in coupling communication with the photosensor **43**, so that an output measurement from the photosensor **43** may be communicated to a processor **45** for formulation of a calibration value. The port **44** may also be designed to be in coupling communication with the LED **42**, so that data, such as the calibration value, from the processor **45** may be received and relayed to the LED **42**.

Communication between the processor **45** and the port **44** may be by conventional cables **46**, or by wires, network or a combination thereof. Alternatively, communication between the processor **45** and the port **44** may be by wireless means **47**. Such wireless means include, but are not limited to, RF, IR, microwave, electromagnetic transmission, acoustic, Bluetooth, home RF, or other wireless means.

In employing wireless communication means, the port **44** may be provided with a transmitter **48**, coupled to the photosensor **43**, and a receiver **49**, coupled to the LED **42**.

Alternatively, the port **44** may be provided with a transceiver (not shown). The transmitter **48** and receiver **49** used in connection with the present invention are those commercially available, and of the type for receiving the signals provided herein.

It should be appreciated that the calibration value received from the processor **45** through the port **44** may be forwarded to the LED **42**, and subsequently stored on a memory mechanism **491** in association with the LED **42**. The memory mechanism **491**, in one embodiment, may be physically coupled to the LED **42**. The calibration value, as noted earlier,

may be used in adjusting the light output of the LED, so that the light output approximates an output accorded to a reference value against which the calibration value was formulated.

The device **40**, in one embodiment, may be a handheld device, and may include a display **492**, on which parameters regarding light output from the LED **42** may be provided to inform a user of the status of the light output from the LED **42**. The display **492** may provide information such as flux, candle power, energy, luminescence, color, CCT, CRI, x-coordinate, y-coordinate, or any other measurable parameter. The device **40** may also be provided with an interface **493** to permit the user to vary light output and/or parameters for the LED. In an alternate embodiment, instead of providing the device **40** with display **492** and user interface **493**, information regarding the light output may be communicated through the port **44** to a unit having processing and display capability, such as a computer **45**, to permit display and adjustment of the light output and the parameters from the LED **42**. Communication of the information through the port **44** can be by conventional cables or by wireless means, as provided above.

The device **40** may also include a memory mechanism **494**, separate from the memory mechanism **491** coupled to the LED **42**. The memory mechanism **494** may be used for storing the output measurement from the photosensor **43** and other light output parameters, all of which can subsequently be communicated to an off-site processor **45** for calibration processing. In an alternate embodiment, the device **40** may incorporate the processor **45** within the device **40** to permit, for example, calibration to be carried out in a timely and efficient manner, without the need to communicate with an off-site processor.

Once the calibration is completed, the process stops and the LED **42** may be removed and returned to its illumination device.

In FIG. 5, another calibration device **50** is provided, in accordance with an embodiment of the present invention. The device **50** is similar to the device **40**, illustrated in FIG. 4, except that the device **50** can be configured to calibrate the light output of one or more LEDs **13**, without having to remove the one or more LEDs **13** from the illumination device **52** within which the one or more LEDs sit.

The calibration device **50**, as shown in FIG. 5, includes a housing **51** and a photosensor **53** at one end of the housing **51** for obtaining an output measurement from the light output generated by the one or more LEDs **13**. The photosensor **53** may be affixed at one end of the housing **51**, or may be adjustable to alter its position within the housing **51**. As the one or more LEDs will remain within the illumination device **52** and will not be positioned on the device **50** during calibration, the calibration device **50** may be provided with an activation unit **54** for inducing light output from the one or more LEDs **13**. To activate the one or more LEDs **13** to generate light output, the activation unit **54** may send a signal directed at the one or more LEDs **13**. To this end, the illumination device **52** or the one or more LEDs **13** themselves may be designed with the ability to receive the signal from the activation unit **54**. The signal from the activation unit **54** can be sent by conventional cable or wirelessly. In the wireless embodiment, the device **50** may include a transmitter **55** coupled to the activation unit **54** to transmit the signal. Correspondingly, the illumination device **52** can be provided with a receiver (not shown) coupled to the one or more LEDs **13** to receive the signal transmitted from the activation unit **54**.

The calibration device **50** may also include a communication mechanism, such as a port **56**, in the housing **51**, similar to port **44** in device **40**. In particular, the port **56** may be

designed to be in coupling communication with the photosensor 53, so that an output measurement from the photosensor 53 may be communicated to a processor 57 for formulation of a calibration value. The port 56 may also be designed so that data, such as the calibration value, from the processor 57 may be received by the device 50, and subsequently relayed to the one or more LEDs 13. The port 56 may employ conventional cables for communication or may employ wireless means, such as a transmitter or receiver, as described above. In one embodiment, the transmitter in connection with the port 56 and transmitter 55, used to transmit activation signals to the one or more LEDs 13, may be a single transmitter.

The device 50, in one embodiment, may include a display 58, on which parameters regarding light output from the one or more LEDs 13 may be provided to inform a user of the status of the light output from the one or more LEDs 13. The device 50 may also be provided with an interface 59 to permit the user to vary light output and/or parameters for the one or more LEDs. The device 50 may also include a memory mechanism 591. The memory mechanism 591 may be used for storing the output measurement from the photosensor 53, as well as other light output parameters, all of which can subsequently be communicated to an off-site processor 57 for calibration processing. In an alternate embodiment, the device 50 may incorporate the processor 57 within the device 50 to permit, for example, calibration to be carried out in a timely and efficient manner, without the need to communicate with an off-site processor.

Looking now at FIG. 6, the present invention further provides an illumination device 60 which may be capable of self calibration. The device 60 may be similar to the module in U.S. Pat. No. 6,016,038, and includes a housing 61, and an LED illumination source 62 including one or more LEDs 13 within the housing 61. A photosensor 63 may be positioned adjacent to the LED illumination source 62 to obtain an output measurement generated by the LED illumination source 62. The position of the photosensor 63 relative to the LED illumination source 62, in one embodiment, permits the photosensor 63 to uniformly record the light output from the source 62.

The device 60 may also include a processor 64 within the housing 61 and in communication with the photosensor 63 for calibrating the output measurement from the photosensor 63 against a reference value. The processor 64 may also be in communication with the LED illumination source 62 for transmitting thereto a resulting calibration value from the processor 64. This calibration value may be used to affect the light output of the source 62, such that the output approximates an output accorded to the reference value. In one embodiment, the calibration process may be part of a feedback loop where the processor 64 monitors the light output from the source 62 via the photosensor 63 and automatically communicates the calibration value to the illumination source 62 to permit the light output to compensate for any changes.

The device 60 further includes a memory mechanism 68 coupled to the LED illumination source 62 and on which the resulting calibration value from the processor 64 may be stored. In one embodiment, the device 60 may include a display 65 on which parameters regarding light output from the LED illumination source 62 may be provided to inform a user of the status of the light output. The device 60 may further include an interface 66 to permit the user to vary the light output parameters.

By providing the device 60 with the above components, the device 60 may be activated to self-calibrate periodically. For instance, parameters regarding the illumination source 62

may be reviewed on the display 65. Should the illumination source 62 require calibration, the interface 66 may be accessed and the calibration process initiated. Once the calibration is completed, and the illumination source 62 can now generate a light output that approximates, for example, a light output defined by the user by way of the interface 66, the calibration ceases. In an embodiment of the invention, the device 60 may be designed to have the processor 64 initiate calibration, for instance, on a periodic basis, within certain predefined intervals, or in response to a particular condition, so that the light output from the illumination source 62 may be kept at a desired predefined level. Again, once calibration permits the illumination source 62 to achieve the desired light output level, the calibration ceases.

The systems, methods and devices provided in connection with the present invention may be used to calibrate an LED light source for a number of reasons, including but not limited to, intensity, color (hue or saturation), specific spectral properties, ambient conditions, internal temperature conditions, external ambient conditions or failure feedback (such as when one or more LEDs fails to operate).

While the invention has been described in connection with the specific embodiments thereof, it will be understood that it is capable of further modification. For example, the calibration value, although discussed as capable of being stored in a memory mechanism associated with the LED or in a memory mechanism on a calibrating device, can also be stored in the housing of an illumination device, or in a stand-alone device such as a computer. The calibration value can additionally be used as a reference value against which other calibration values may be adjusted against. As a reference value, the calibration value, like other reference values used in the present invention, may be formatted within a table. In addition, reference value against which the output measurement may be adjusted can be any defined value, for example, a value obtained from the measurement of environmental lighting. Specifically, the photosensor may be used to take a reading of ambient light in a room. Such a reading and its associated value may be stored as a reference value. Subsequently, during calibration, the LED output may be adjusted to approximate the ambient light condition within the room.

Moreover, the calibration procedure, in accordance with an embodiment of the invention, may be accomplished through a network of lighting devices. In particular, the calibration value may be used to adjust the illumination properties of a new device so that it may be similar to the illumination properties of other devices in the network. As an example, a new lighting unit within a network can receive signals from the other devices to which may initiate a calibration process in the new lighting unit. Information contained in the signals such as, but not limited to, age of the illumination devices within the network, the manufacturing date of the illumination devices, the illumination conditions of such devices, or combinations of parameters (such as age, manufacturing date, and previous calibration data), may cause the new lighting unit in the network to initiate a calibration procedure. In particular, as the older illumination devices in the network may be of a different quality, for example, they have lower light output, or they may have aged and deteriorated. By permitting the new lighting unit to calibrate, the new lighting unit would match the older illumination devices in the network.

The network of lighting units described may communicate through any communications method, such as but not limited to, wire, cable, network, RF, IR, microwave, acoustic, or electromagnetic communication. The units in the network may communicate other instructions along with the calibration information, or the units may only communicate the

11

calibration information. In addition, there may be instances where the lighting units may be used in a networked fashion to allow coordinated lighting effects. The calibration information could be communicated using this network or a network specifically for calibration information. Moreover, the LEDs within the lighting units may also be used to communicate the calibration information to the other lighting units, for instance, by pulsing in a particular pattern.

Furthermore, this application is intended to cover any variations, uses, or adaptations of the invention, including such departures from the present disclosure as come within known or customary practice in the art to which the invention pertains, and as fall within the scope of the appended claims.

The invention claimed is:

1. An LED-based lighting apparatus, comprising:  
at least one first LED to generate first radiation having a first spectrum;

at least one second LED to generate second radiation having a second spectrum different than the first spectrum;  
a memory for storing at least one first calibration value and at least one second calibration value, wherein the first calibration value represents a difference between a peak value of the first LED and a reference value established for the first LED, and wherein the second calibration value represents a difference between a peak value of the second LED and a reference value established for the second LED; and

at least one controller to receive at least first and second lighting commands, the at least one controller configured to:

control the at least one first LED and the at least one second LED using a pulse width modulation technique, the at least first and second lighting commands representing respective duty cycles of pulse width modulation signals used to control the at least one first LED and the at least one second LED,

apply the at least one first calibration value to the first lighting command to control the at least one first LED so as to output the first radiation at a first calibrated intensity that substantially corresponds in a predetermined manner to the first lighting command, and

apply the at least one second calibration value to the second lighting command to control the at least one second LED so as to output the second radiation at a second calibrated intensity that substantially corresponds in a predetermined manner to the second lighting command.

2. The apparatus of claim 1, wherein the at least one first LED and the at least one second LED are arranged with respect to each other so as to mix the first and second radiation having the respective first and second calibrated intensities to produce a single calibrated color of the visible radiation emanating from the apparatus at a given time.

3. The apparatus of claim 2, wherein the at least first and second lighting commands are provided to the at least one controller such that the single calibrated color of the visible radiation emanating from the apparatus is a calibrated substantially white color.

4. The apparatus of claim 3, further comprising an at least partially transparent housing that at least partially encloses at least the at least one first LED and the at least one second LED.

5. The apparatus of claim 4, wherein the at least partially transparent housing is configured to resemble a conventional light bulb.

6. The apparatus of claim 5, wherein the at least partially transparent housing comprises at least one connector that is adapted to engage mechanically and electrically with a conventional light socket arrangement.

12

7. The apparatus of claim 1, wherein the at least one controller is configured as an addressable controller to receive the at least first and second lighting commands via a network connection based on an address associated with the addressable controller.

8. The apparatus of claim 7, wherein the at least first and second lighting commands are communicated over the network connection using a DMX protocol.

9. The apparatus of claim 1, wherein the at least one controller is configured as an addressable controller to receive the at least first and second lighting commands via a network connection based on an address associated with the addressable controller.

10. The apparatus of claim 9, wherein the at least first and second lighting commands are communicated over the network connection using a DMX protocol.

11. A method, comprising acts of:

A) energizing at least one first LED so as to generate first radiation having a first spectrum;

B) energizing at least one second LED so as to generate second radiation having a second spectrum different than the first spectrum;

C) providing at least first and second lighting commands, the at least first and second lighting commands representing respective duty cycles of pulse width modulation signals for controlling the at least one first LED and the at least one second LED;

D) retrieving from at least one memory at least one first calibration value and at least one second calibration value, wherein the first calibration value represents a difference between a peak value of the first LED and a reference value established for the first LED, and wherein the second calibration value represents a difference between a peak value of the second LED and a reference value established for the second LED;

E) applying the at least one first calibration value to the first lighting command to control the at least one first LED so as to output the first radiation at a first calibrated intensity that substantially corresponds in a predetermined manner to the first lighting command; and

F) applying the at least one second calibration value to the second lighting command to control the at least one second LED so as to output the second radiation at a second calibrated intensity that substantially corresponds in a predetermined manner to the second lighting command.

12. The method of claim 11, further comprising an act of: mixing the first and second radiation having the respective first and second calibrated intensities to produce a single calibrated color of the visible radiation at a given time.

13. The method of claim 12, wherein the act C) comprises an act of:

providing the at least first and second lighting commands such that the single calibrated color of the visible radiation emanating from the apparatus is a calibrated substantially white color.

14. The method of claim 11, wherein the act C) comprises an act of:

C1) providing the at least first and second lighting commands as addressed commands via a network connection.

15. The method of claim 14, wherein the act C1) comprises an act of:

providing the at least first and second lighting commands via a network connection using a DMX protocol.