



US007401934B2

(12) **United States Patent**
Hunt

(10) **Patent No.:** **US 7,401,934 B2**
(45) **Date of Patent:** **Jul. 22, 2008**

- (54) **FILE SYSTEM FOR A STAGE LIGHTING ARRAY SYSTEM** 5,414,328 A * 5/1995 Hunt et al. 315/316
5,769,527 A 6/1998 Taylor et al.
5,769,531 A * 6/1998 Hunt et al. 362/233
5,812,422 A 9/1998 Lyons
- (75) Inventor: **Mark A. Hunt**, Derby (GB)
- (73) Assignee: **Production Resource Group, L.L.C.**,
New Windsor, NY (US)
5,915,132 A * 6/1999 Counts, Jr. 396/1
5,940,049 A 8/1999 Hinman et al.
5,969,485 A 10/1999 Hunt
5,983,280 A 11/1999 Hunt
6,029,122 A 2/2000 Hunt
6,120,262 A * 9/2000 McDonough et al. 417/424.1
6,175,771 B1 1/2001 Hunt et al.
6,326,741 B1 * 12/2001 Hunt et al. 315/316
6,429,867 B1 8/2002 Deering
6,538,797 B1 3/2003 Hunt
6,548,967 B1 4/2003 Dowling et al.
- (*) Notice: Subject to any disclaimer, the term of this patent is extended or adjusted under 35 U.S.C. 154(b) by 0 days.
- (21) Appl. No.: **11/688,198**
- (22) Filed: **Mar. 19, 2007**
- (65) **Prior Publication Data**
US 2007/0168851 A1 Jul. 19, 2007

Related U.S. Application Data

- (62) Division of application No. 10/913,022, filed on Aug. 6, 2004, now Pat. No. 7,290,895.
- (60) Provisional application No. 60/493,862, filed on Aug. 8, 2003.

(Continued)

FOREIGN PATENT DOCUMENTS

- (51) **Int. Cl.**
F21V 33/00 (2006.01)
B60Q 1/124 (2006.01)
H05B 37/00 (2006.01)
H05B 39/00 (2006.01)
H05B 41/00 (2006.01)
G05B 11/01 (2006.01)
- (52) **U.S. Cl.** **362/85**; 362/233; 315/316;
315/318; 700/17; 700/19
- (58) **Field of Classification Search** 362/85,
362/233, 286, 301; 315/189, 291, 312, 316,
315/318, 362; 345/6, 423; 700/3, 17, 19
See application file for complete search history.

Primary Examiner—Crystal Barnes-Bullock
(74) *Attorney, Agent, or Firm*—Law Office SC Harris

(57) **ABSTRACT**

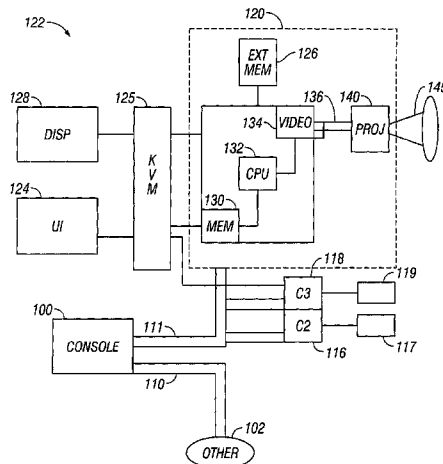
A file system for a stage lighting system that maintains the different files associated with the stage lighting system. Each of the files that can represent an effect are maintained within the system within a configuration file. The configuration file can be updated on each start of the system so that the system can maintain information indicative of current configuration files. A test mode can also be entered in which a pre-formed show can be tested against the current state of the configuration files.

(56) **References Cited**

U.S. PATENT DOCUMENTS

- 4,797,795 A * 1/1989 Callahan 362/233
- 5,061,997 A 10/1991 Rea et al.

4 Claims, 3 Drawing Sheets



US 7,401,934 B2

Page 2

U.S. PATENT DOCUMENTS							
			2003/0107888	A1*	6/2003	Devlin et al.	362/233
			2004/0160198	A1	8/2004	Hewlett et al.	
			2004/0252486	A1	12/2004	Krause	
6,549,326	B2	4/2003	Hunt et al.				
6,597,132	B2	7/2003	Hunt et al.				
6,720,743	B2*	4/2004	Yano et al.				315/291
6,765,544	B1	7/2004	Wilson et al.				
6,774,584	B2	8/2004	Lys et al.				
6,801,353	B2	10/2004	Hunt et al.				
6,827,464	B2*	12/2004	Koren et al.				362/96
6,891,656	B2	5/2005	Hunt				
6,894,443	B2	5/2005	Hunt et al.				
6,922,679	B2	7/2005	Watkins et al.				
6,930,456	B2*	8/2005	Belliveau				315/318
7,057,797	B2	6/2006	Hunt				
7,139,617	B1	11/2006	Morgan et al.				
7,148,632	B2	12/2006	Berman et al.				
7,161,562	B1	1/2007	Hunt et al.				
7,202,613	B2*	4/2007	Morgan et al.				315/312
2002/0078221	A1	6/2002	Blackwell et al.				
			2005/0083487	A1	4/2005	Hunt et al.	
			2005/0086589	A1	4/2005	Hunt	
			2005/0094635	A1	5/2005	Hunt	
			2005/0190985	A1	9/2005	Hunt	
			2005/0200318	A1	9/2005	Hunt et al.	
			2005/0206328	A1	9/2005	Hunt	
			2005/0207163	A1	9/2005	Hunt	
			2005/0213335	A1	9/2005	Hunt	
			2005/0275626	A1*	12/2005	Mueller et al.	345/156
			2006/0158461	A1	7/2006	Reese et al.	
			2006/0187532	A1	8/2006	Hewlett et al.	
			2006/0227297	A1	10/2006	Hunt	
			2007/0145915	A1*	6/2007	Roberge et al.	315/312

* cited by examiner

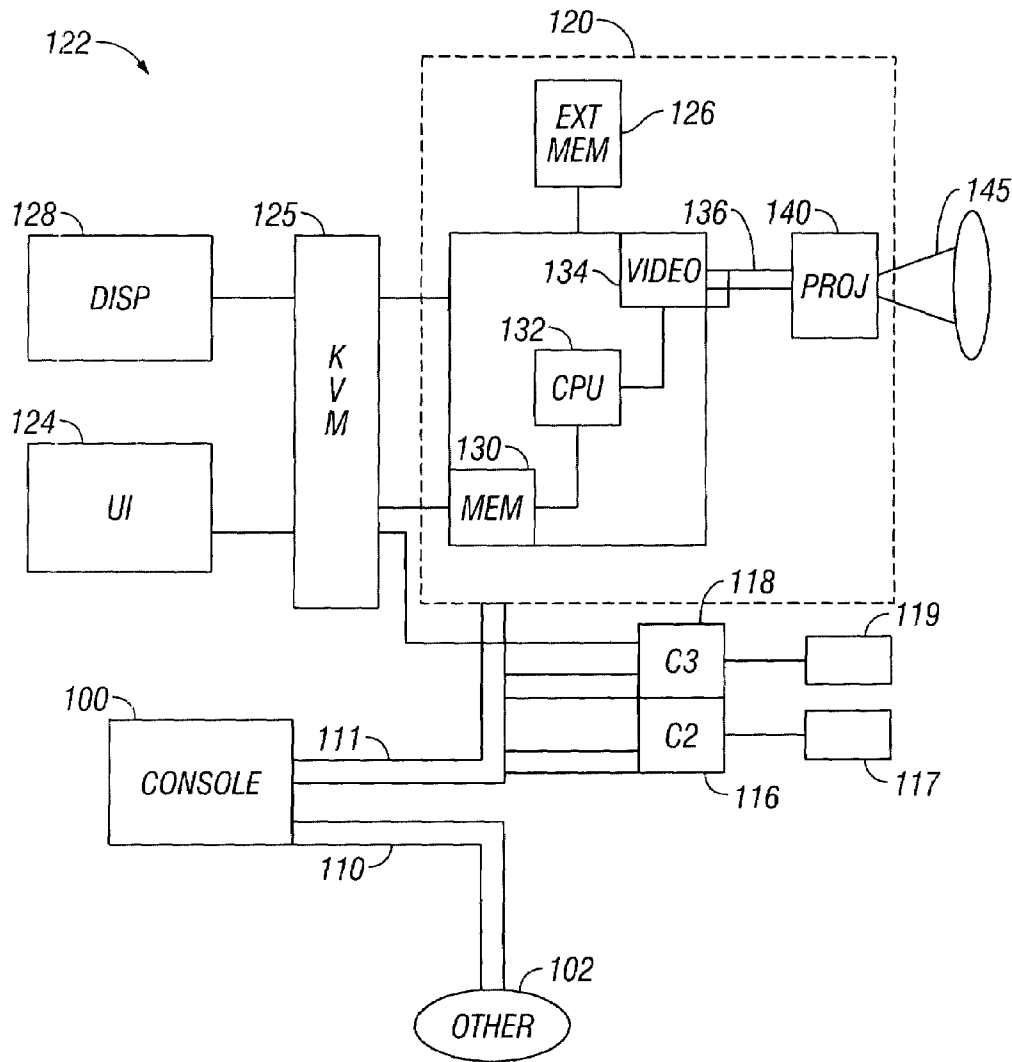


FIG. 1

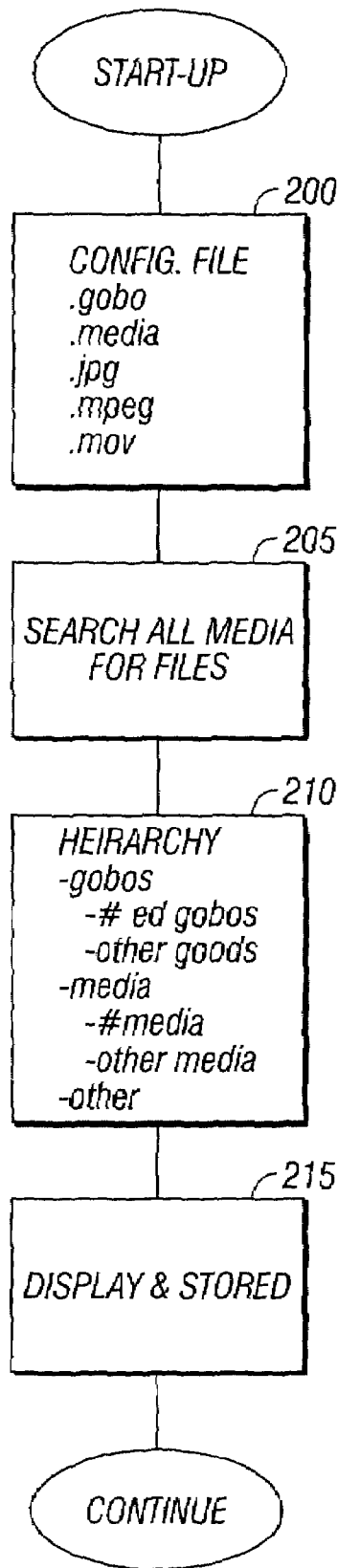


FIG. 2

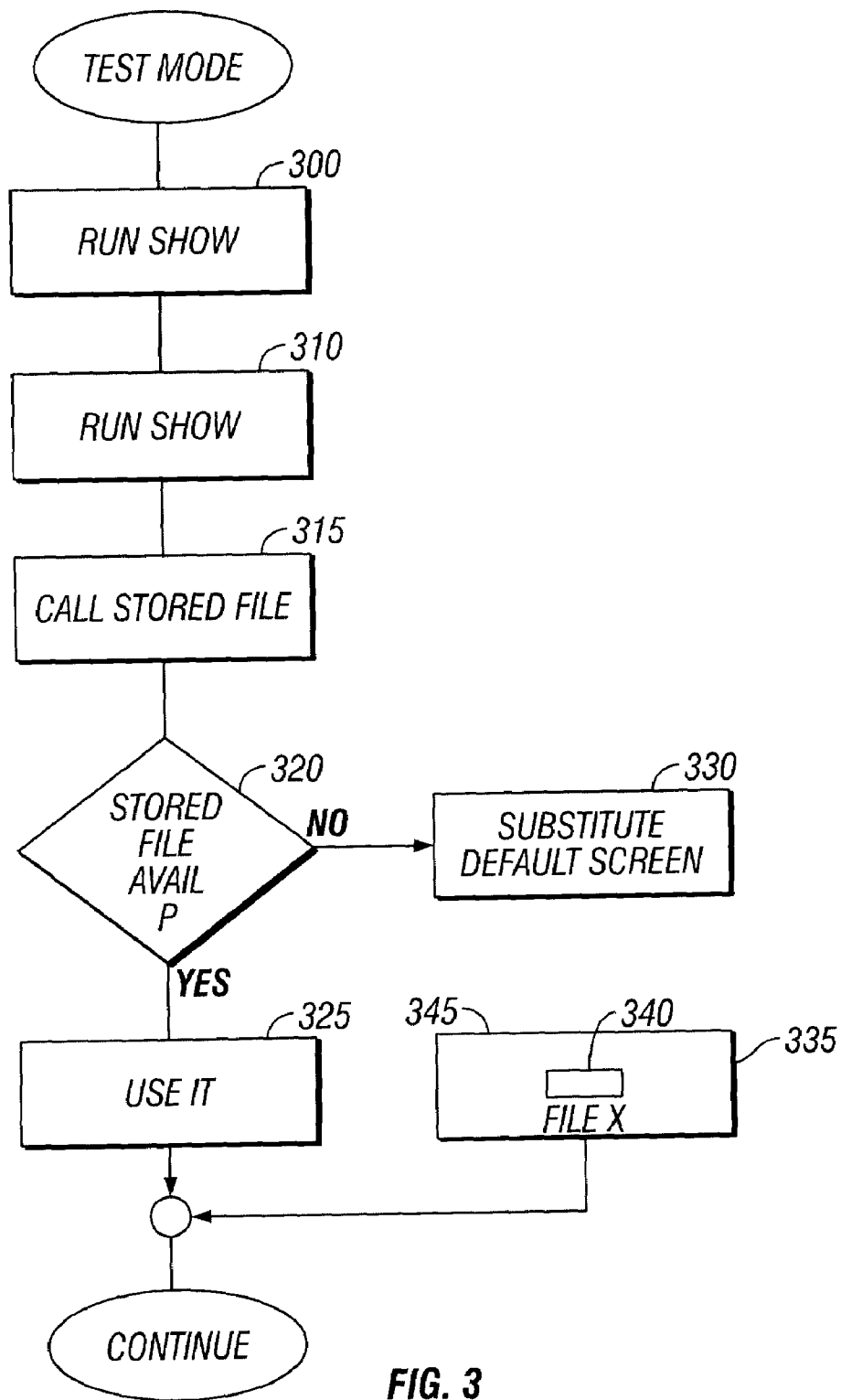


FIG. 3

FILE SYSTEM FOR A STAGE LIGHTING ARRAY SYSTEM

CROSS-REFERENCE TO RELATED APPLICATIONS

This application is a divisional of U.S. patent application Ser. No. 10/913,022, filed Aug. 6, 2004 now U.S. Pat. No. 7,290,895; which claims benefit of the priority of U.S. Provisional Application Ser. No. 60/493,862 filed Aug. 8, 2003 and entitled "File System for a Stage Lighting Array System".

BACKGROUND

Stage lighting systems may be extremely complex. A typical system may include a console which controls a number of different lighting systems. Each lighting system may be a self-contained system, or may be a computer-based box that controls an external system. Many complicated effects are often carried out during the show. The complicated effects require knowledge of the files that actually exist within each lamp.

SUMMARY

The present system defines a special file system and discovery mechanism for automatically determining the content of certain files in a display system of a type adapted for digital control of an external projector.

BRIEF DESCRIPTION OF THE DRAWINGS

FIG. 1 shows a block diagram of the overall system.

FIG. 2 shows a flowchart of operation of the stored a routine which automatically indexes the kinds of files which can be used;

FIG. 3 shows a flowchart of operation of a special test mode.

DETAILED DESCRIPTION

A block diagram of the basic system is shown in FIG. 1. A number of lights collectively form a "show", with the number of lights typically being between 5 and 200 lights, although there is no actual limit on the number of lights that can form a show. Effects being produced by all of these lights are controlled by the console 100, under control of a lighting designer or operator. The console may produce one or many outputs which collectively control the array of lights. In FIG. 1, the line 111 is shown connected from console 100, to control a first light assembly 120 which is explained in further detail. The line 110 is shown as controlling other lights shown generically as 102; where it should be understood that there are at least 2 lights, and more typically between 5 and 200 lights in the overall show. In an embodiment, the controlling line 110 may be a control using ethernet protocol.

The actual light 120 being controlled by the control line 102 is an MBOX (™) light made by Light and Sound Design, Ltd. The M BOX is formed of a computer part 122 which is programmed with suitable programs as described herein, a user interface 124, an external memory source 126, and a display 128. In a preferred embodiment, a keyboard switch or KVM switch 125 is used so that the user interface 124 and display 128 may be used in common for all of a multiplicity of different computer units 122, 116 & 118.

The computer part 122 also includes its own internal memory 130, which stores both programs which are used for

image processing, and also stores prestored gobos and effects to be used by the light. For example, the memory 130 may store video clips, as well as a number of different shapes, and may store specified libraries from different gobo manufacturers. The gobo shapes may be used to shape the outer shape of the light beam being projected. In an embodiment, the final effect produced by the light may be a combination of a number of different layers, and the shape of the layer may also be controlled by the images stored in memory 130.

The computer part 122 also includes a processor shown as CPU 132, and a video card 134. All of these may be off-the-shelf items. The CPU 132 operates based on the programs stored in memory 130 to produce a video output using video card 134. The video output 136 is connected to an external projector 140. In an embodiment, this projector 140 may be a projector which is digitally controllable, which is to say that each of a plurality of digital bits forming the image is separately controllable for brightness, color and other aspects such as duty cycle. For example, the projector 140 may be a digital micromirror based device or DMD, also referred to as a digital light processor based device. The projector produces an output effect 145 which is used for part of the show. For example, the effect 145 may be projected onto the stage.

As explained above, there may be a number of computer units 122 controlled by the common user interface 124 and display 128, and also controlled by the ethernet control signal 102. In this embodiment, two additional computer units 116 and 118 are shown, each also controlling external projectors 117, 119 to produce other lighting effects.

In operation, the CPU 132 operates according to a stored program to carry out certain operations based on the basic shapes and effects which are stored in the memory 130. For example, the CPU 132 typically controls a number of different layers collectively forming the image which is used to control the projector. Each of these layers may define shape, color and movement. The movements can be rotations or can be more complicated movements. One layer may cover any other layer or may add to or subtract from any of the other layers. The combined images, as controlled in this way, form a composite image 136 which is used to control the projector.

The images may be stored in memory as libraries, or may be part of external memory 126 that is added to the libraries. The CPU 132, however, needs to know which images it can use. Accordingly, the CPU executes the routine shown in FIG. 2 at startup. This routine enables the system to look for all of the different files and effects which can be used during the operation.

At 200, the device looks for its configuration file. The configuration file defines which kinds of files to look for in the system. Typical files may be files of type "gobo", type "media", as well as more conventional types such as JPEG and MPEG files may be used. In addition, the user can specify different types of files. The type of gobo in the type "media" are special files for use with the M BOX system. The "gobo" file comprises compiled code representing an effect of a gobo, which may comprise an image which is compiled to include a certain effect.

At 205, the processor searches all the memory media which may include memory 130, as well as external memory 126, for all files of the specified types. This search may use an indexing technique for faster results. For example, the indexing technique may index all files on the memory 130 during spare time of the computer 122. Any file which is added after the index, of course, needs to be searched separately and otherwise the system simply searches the index. A similar indexing technique may be used for external memory 126 by using a serial number of the external memory; that is, by using

a unique identifying code referring to the removable memory. The external memory may be a removable memory such as a memory stick or like nonvolatile memory, or a CD or DVD drive.

At **210**, the CPU makes a list of all the found files, and arranges them in a specified hierarchy. In one preferred hierarchy, a hyperlinked list, for example, in XML, is formed. The list may show the basic overall categories such as gobos, media, and others. Clicking on any item on the list may produce a sublist. Under the gobos, there is a sublist for numbered gobos, and other gobos. The basic gobos in the library may be named according to a 16-bit gobo number which uniquely identifies the gobo as part of the library. However, gobos may also be named as different things, hence the external gobos may be other gobos. Similarly, media may be numbered in a similar way, and numbered media and other media may be separately identified. Clicking on any item, such as the numbered gobos, can bring up the list of gobos or may bring up a sublist of the different gobos.

The file names associated with the gobos may also include Meta Tag information, and that Meta Tag information may be viewable as part of the XML hierarchy. In addition, the hierarchy shown in **210** may optionally include thumbnails or may include the light showing certain information about the gobos in the media. For example, for gobos, the thumbnail may show the basic shape of the gobo. The thumbnails may be automatically produced as a preview, or may be entered by a user as part of the meta tag information. The other information, which is shown as part of the hierarchy, may be any other feature which can be used to effect the output video produced at **134**. For example, different effects which can be added to gobos can be compiled and stored as a file. The different effects may be specified types of rotation, shaping, and other such effects.

Basically any effect which can be used on an image can be compiled as one of the other effects.

The Meta Tag information and/or thumbnail information can include some information about the different gobos which are used. This hierarchy of files is displayed to the user at **215**, and may be also stored in a specified location so that the user can call up the XML file at any point. In this way, a user can find the different files which exist on the system.

In operation, the user/operator can select any of the files for part of the show. In addition, a show can be tested to determine if all the files needed for that show are available. The testing is carried out by entering a test mode which is shown in FIG. **3**. In this test mode, the user commands that a show be run at **300**. The processor begins running the show at **310** by calling up all necessary stored files and producing the layers representing those stored files with an output. The operation involves calling a stored file at **315**. At **320**, the system determines if the stored file is available. This may be done by searching the XML file for an index or by searching all files in the system. If the stored file is available, then the stored file is used and operation continues at **325**. However, if the stored file is not available at **320**, then a special default screen is substituted at **330**. In an embodiment, the special default

screen is as shown in **335**; that is a black bar **340** shown on a white screen **345**. A black bar preferably goes across approximately 70% of the screen both in width and in height directions. This default screen makes it very easy to determine which files are unavailable.

In an embodiment, the file name may also be alphanumerically placed on the default screen. The operation then continues to show the remainder of the show with the default screen in place of the missing file. A user reviewing this, however, may be able to determine, at a glance, that the default screen is present and therefore that a file is missing.

Although only a few embodiments have been disclosed in detail above, other modifications are possible. For example, other types of default screens may be used. In addition, other files besides those mentioned may be used, and also this system may be usable in other types of lighting instruments. For example, this system has been described as being used in a system in which the computer box which controls the image that is formed is separate from the projector that actually projects the image. However, the computer box **122** and projector **140** may be combined into a single device, such as the icon M device. In addition, while the above describes the projector as being a DMD based projector, other types of controlled projectors may also be used, including projectors based on grating light valves and the like.

All such modifications are intended to be encompassed within the following claims, in which.

What is claimed is:

1. A system, comprising:

a controlling console, which produces output signals indicative of desired lighting effects, said desired lighting effects including at least a shape for light to be projected, and a rotation effect for said light to be projected;

a first lighting processing part, and a second lighting processing part, each of said lighting processing parts including a processor, and a memory storage, storing prestored lighting effects, and a video rendering part, which produces an output indicative of the prestored lighting effects based on commanded lighting effects; and the user interface, and user interface switch, said user interface enabling local control of either the first or second lighting part, based on position of the switch, and enabling local display of the first or second lighting part, based on position of the switch.

2. A system as in claim **1**, wherein said first and second lighting processing part each also include a configuration file representative of different lighting effects which are stored within the lighting processing part.

3. A system as in claim **1**, wherein said configuration file is in XML form.

4. A system as in claim **2**, wherein each of said lighting processing parts produces an output effect by combining effects from said configuration file to form layers of an effect, said layers collectively forming said output effect.

* * * * *